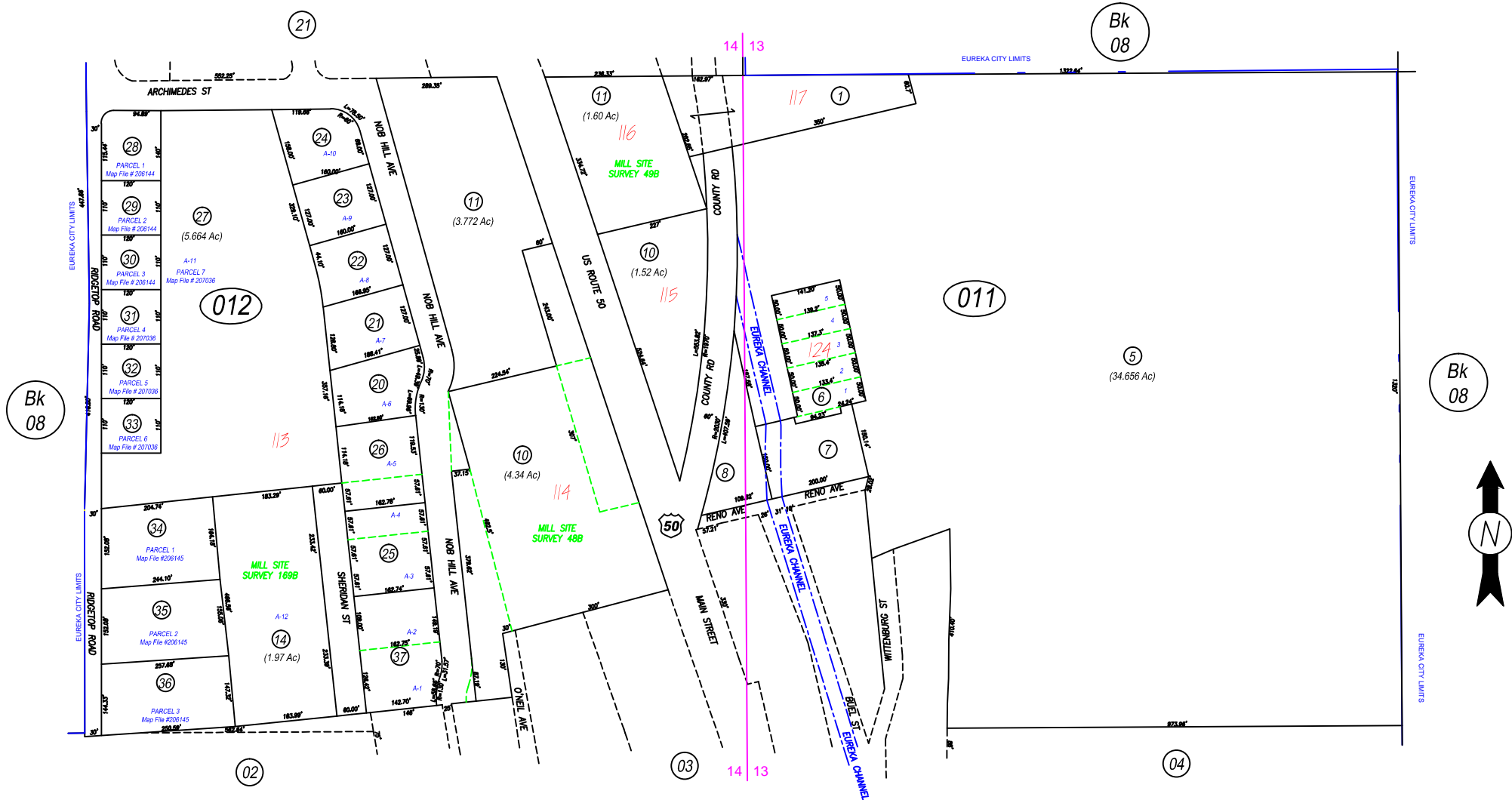


A Portion in the NW4 Sec. 13, NE4 Sec. 14, T19N, R53E

01-01



Bk 08

Bk 08

Bk 08



NOTE: ASSESSOR'S BLOCK NUMBERS SHOWN IN ELLIPSES.
ASSESSOR'S PARCEL NUMBERS SHOWN IN CIRCLES.

NOTE: This plat is for assessment purposes only and does not represent a survey. No liability is assumed as to the accuracy of the data delineated hereon. Use of this plat for other than assessment purposes is forbidden unless approved by the Eureka County Assessor's Office.

MAP FILE # 223586
REV/EUCOAS/JAN2013/MM
REV/EUCOAS/NOV2011/MM
MAP FILE # 206145
MAP FILE # 207036
MAP FILE # 206144
REV/EUCOAS/JULY 2007/MM

EUCOAS/OCT 99MM
SCALE: 1"=200'

EUREKA
TOWNSITE

EUREKA COUNTY