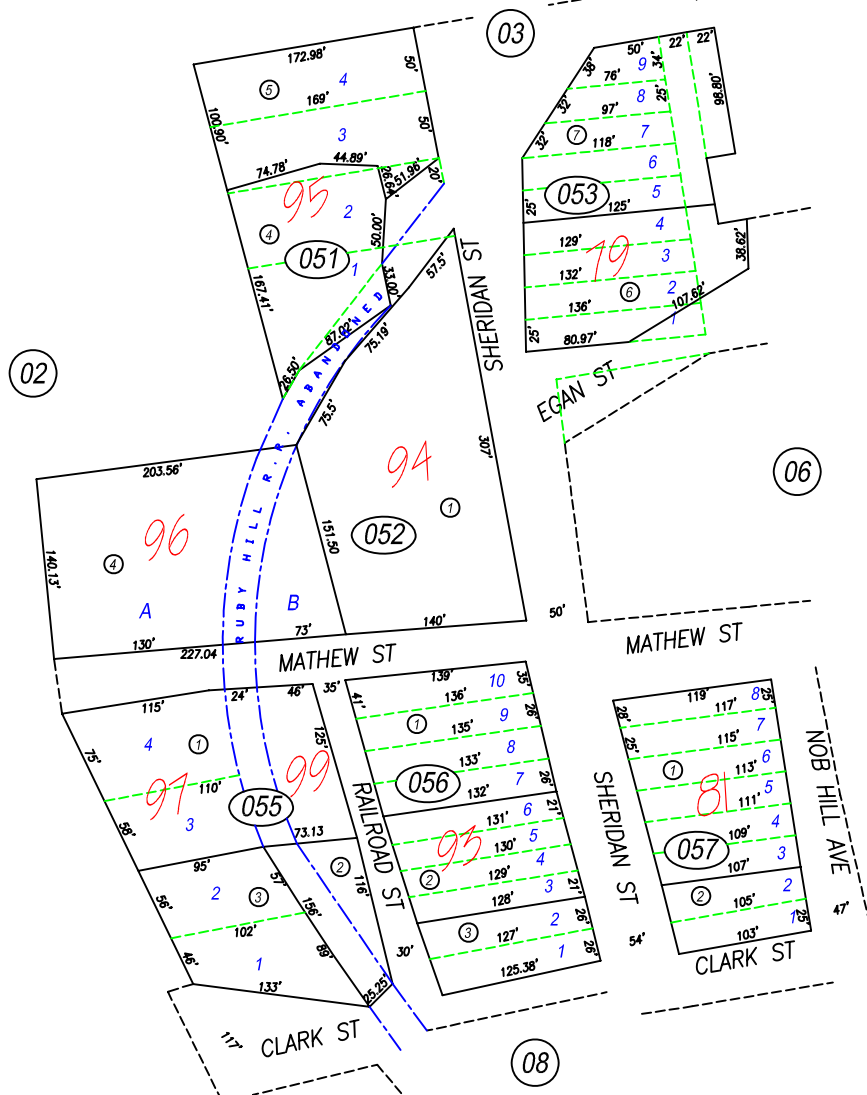


A Portion in the SE4 Sec. 14, T19N, R53E

01-05



NOTE: This plat is for assessment purposes only and does not represent a survey. No liability is assumed as to the accuracy of the data delineated hereon. Use of this plat for other than assessment purposes is forbidden unless approved by the Eureka County Assessor's Office.

NOTE: ASSESSOR'S BLOCK NUMBERS SHOWN IN ELLIPSES.
ASSESSOR'S PARCEL NUMBERS SHOWN IN CIRCLES.



B434P307B#204428 REV/EUCDAS/APR 2006/WH
REV/EUCDAS/OCT2005/WH

EUCDAS/NDV 99/WH
SCALE: 1"=100'

EUREKA
TOWNSITE

EUREKA COUNTY