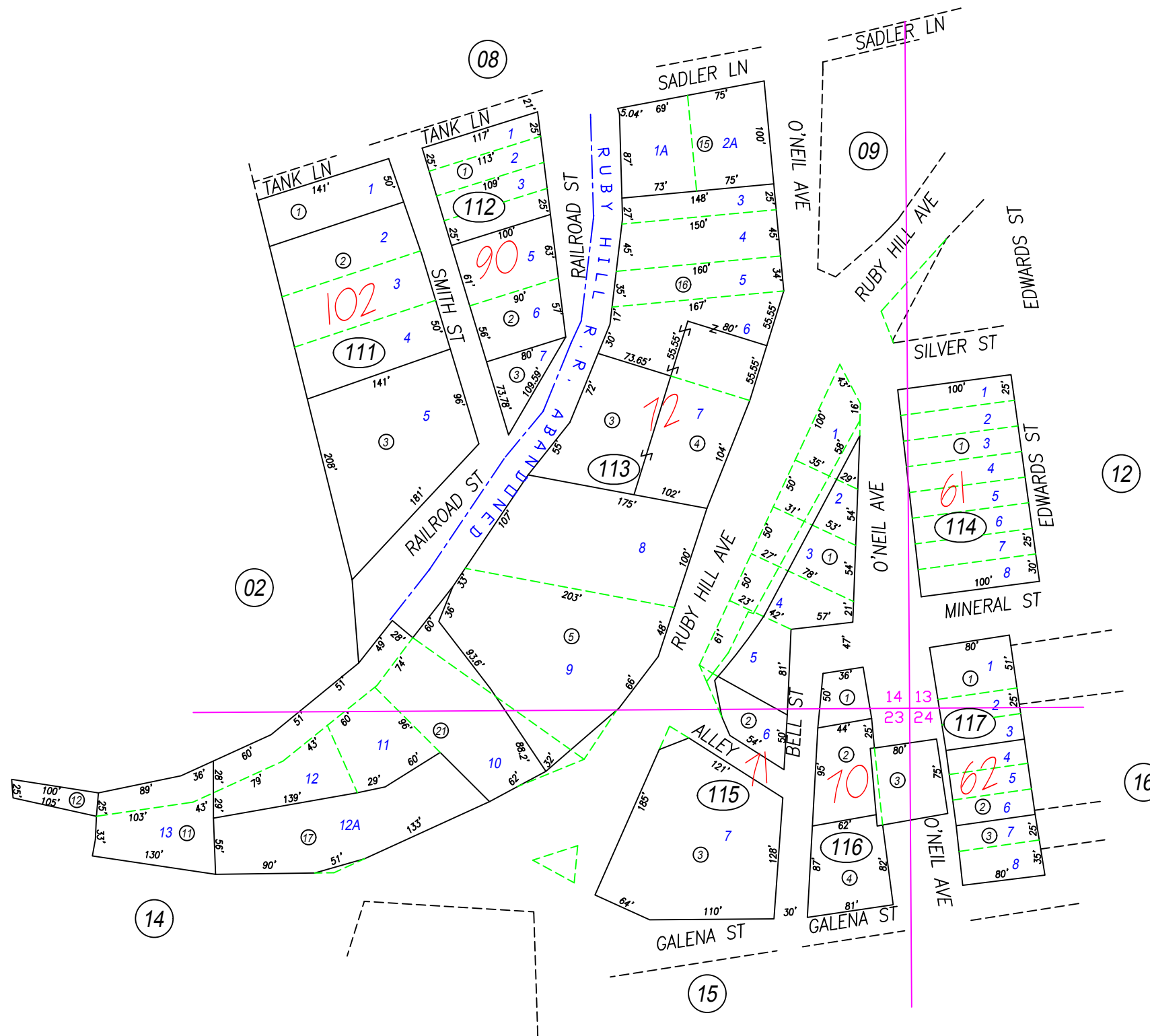


A Portion in Sections 13, 14, 23, & 24 T19N, R53E

01-11



NOTE: ASSESSOR'S BLOCK NUMBERS SHOWN IN ELLIPSES.
ASSESSOR'S PARCEL NUMBERS SHOWN IN CIRCLES.

NOTE: This plat is for assessment purposes only and does not represent a survey. No liability is assumed as to the accuracy of the data delineated hereon. Use of this plat for other than assessment purposes is forbidden unless approved by the Eureka County Assessor's Office.

REV/EUCDAS/FEB 2010/MM
REV/EUCDAS/JAN 2009/MM

EUCDAS/OCT 99/MM
SCALE: 1"=125'

EUREKA
TOWNSITE

EUREKA COUNTY