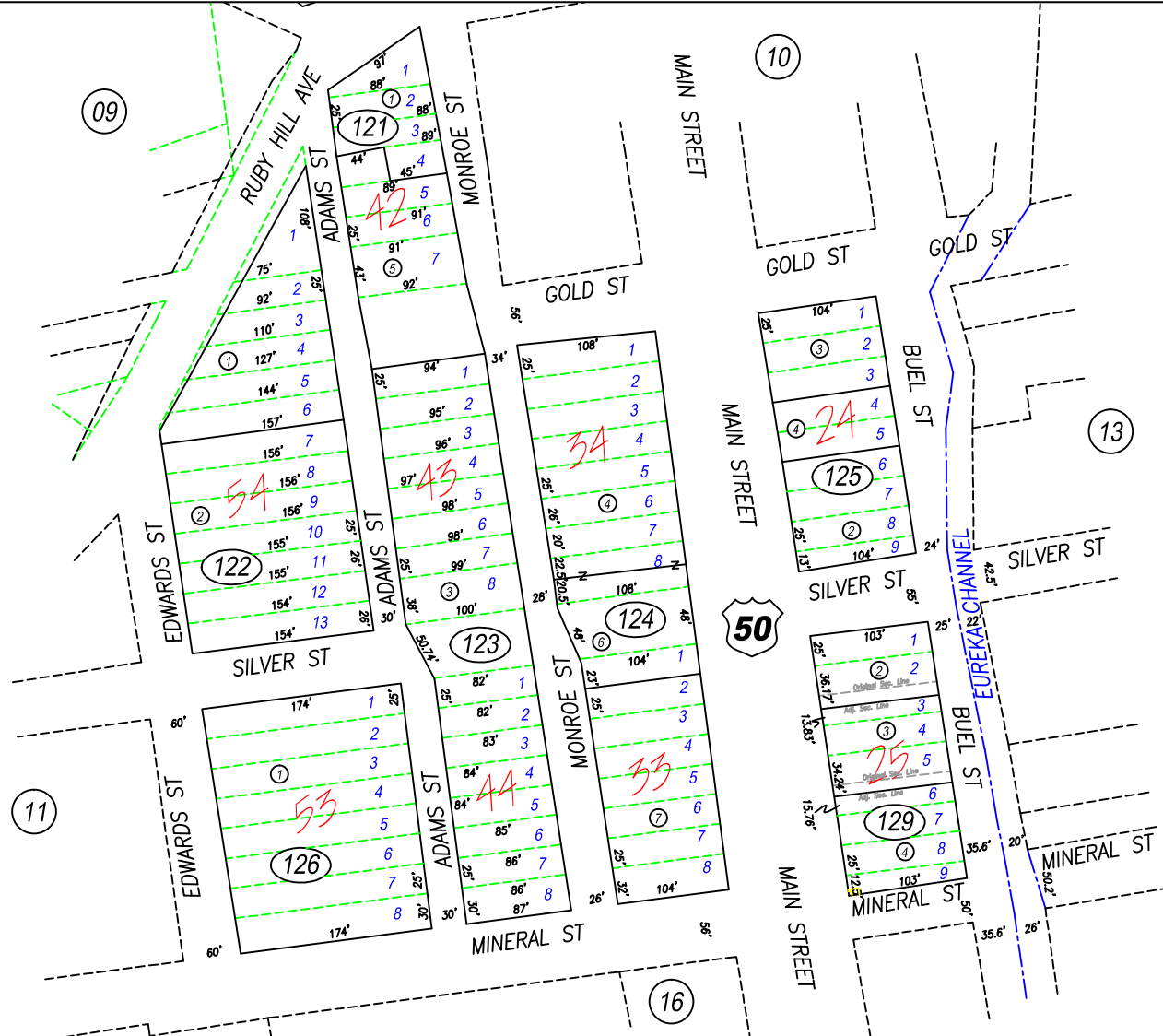


A Portion in the SW4 Sec. 13, T19N, R53E

01-12



NOTE: This plat is for assessment purposes only and does not represent a survey. No liability is assumed as to the accuracy of the data delineated hereon. Use of this plat for other than assessment purposes is forbidden unless approved by the Eureka County Assessor's Office.

NOTE: ASSESSOR'S BLOCK NUMBERS SHOWN IN ELLIPSES.
ASSESSOR'S PARCEL NUMBERS SHOWN IN CIRCLES.



Map File #208289

REV/EUCDAS/JULY2012/1M
REV/EUCDAS/JAN 2009/1M
REV/EUCDAS/MAR 2007/1M
REV/EUCDAS/MAR 2001/1M

EUCDAS/DCI 99/1M
SCALE: 1"=100'

EUREKA
TOWNSITE

EUREKA COUNTY