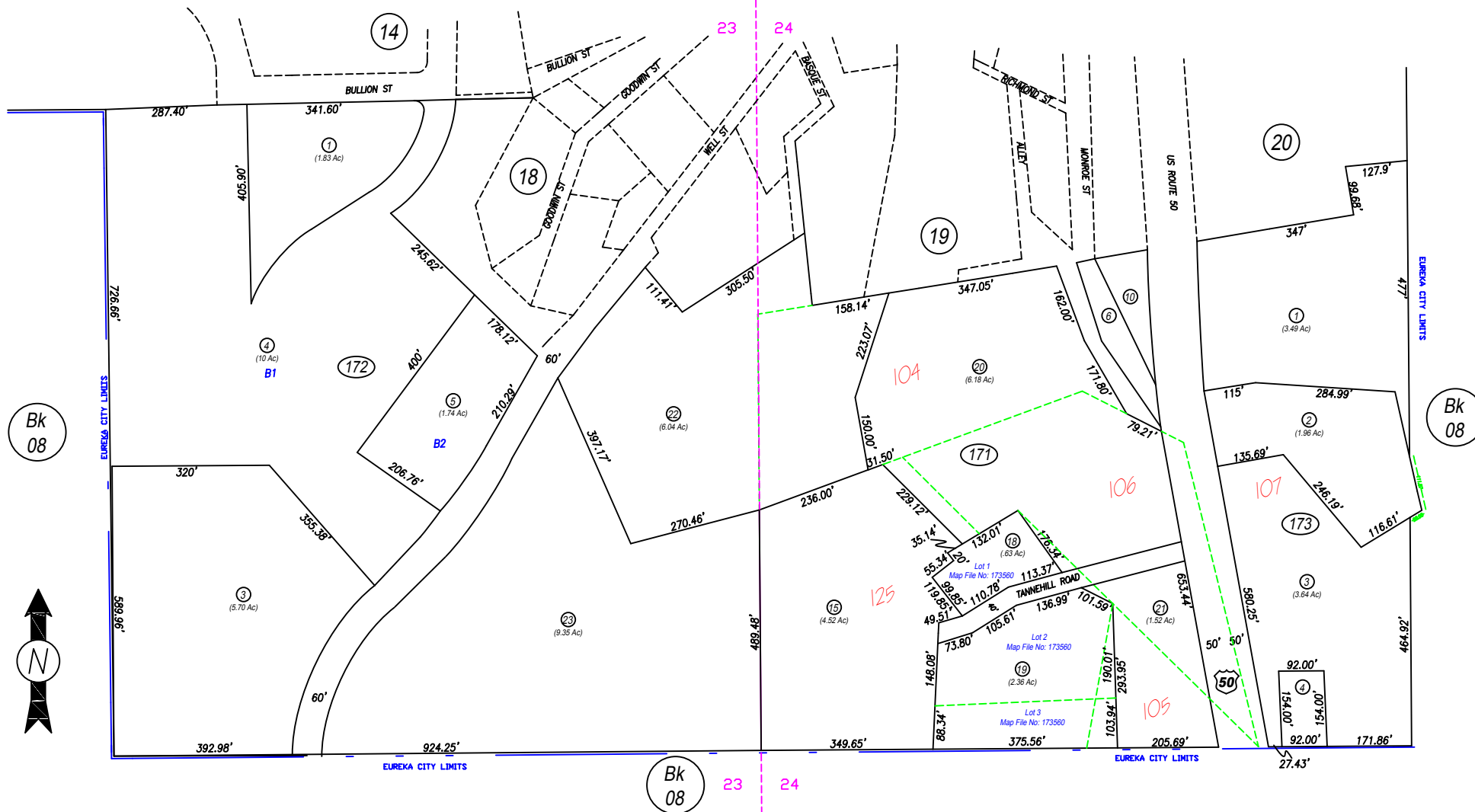


A Portion in the NE4 Sec. 23, NW4 Sec. 24, T19N, R53E

01-17



NOTE: This plat is for assessment purposes only and does not represent a survey. No liability is assumed as to the accuracy of the data delineated hereon. Use of this plat for other than assessment purposes is forbidden unless approved by the Eureka County Assessor's Office.

NOTE: ASSESSOR'S BLOCK NUMBERS SHOWN IN ELLIPSES.
ASSESSOR'S PARCEL NUMBERS SHOWN IN CIRCLES.

Map File # 212688

EUCDAS/REV/NDV 2008/HH
EUCDAS/REV/DCT2002/HH
REV/AUG 2001/HH
REV/NDV 2000/HH

EUCDAS/NDV 99/HH
SCALE: 1"=200'

**EUREKA
TOWNSITE**

EUREKA COUNTY