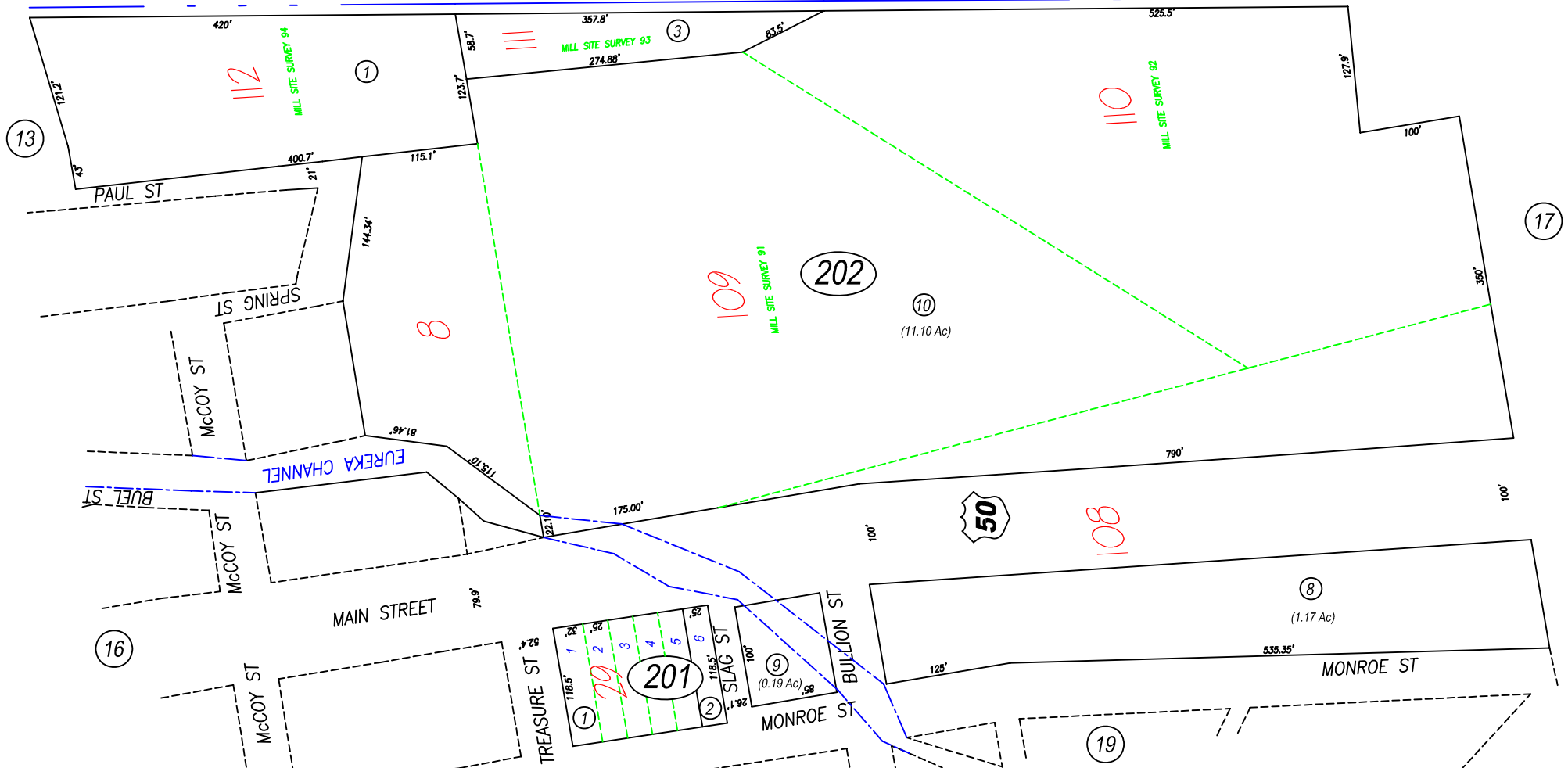


A Poriton in the NW4 Sec. 24, T19N, R53E

01-20

Bk
08

EUREKA CITY LIMITS



NOTE: This plat is for assessment purposes only and does not represent a survey. No liability is assumed as to the accuracy of the data delineated hereon. Use of this plat for other than assessment purposes is forbidden unless approved by the Eureka County Assessor's Office.

NOTE: ASSESSOR'S BLOCK NUMBERS SHOWN IN ELLIPSES.
ASSESSOR'S PARCEL NUMBERS SHOWN IN CIRCLES.

EUREKA
TOWNSITE

EUREKA COUNTY

EUCDAS/NDV 99/104

SCALE: 1"=100'

