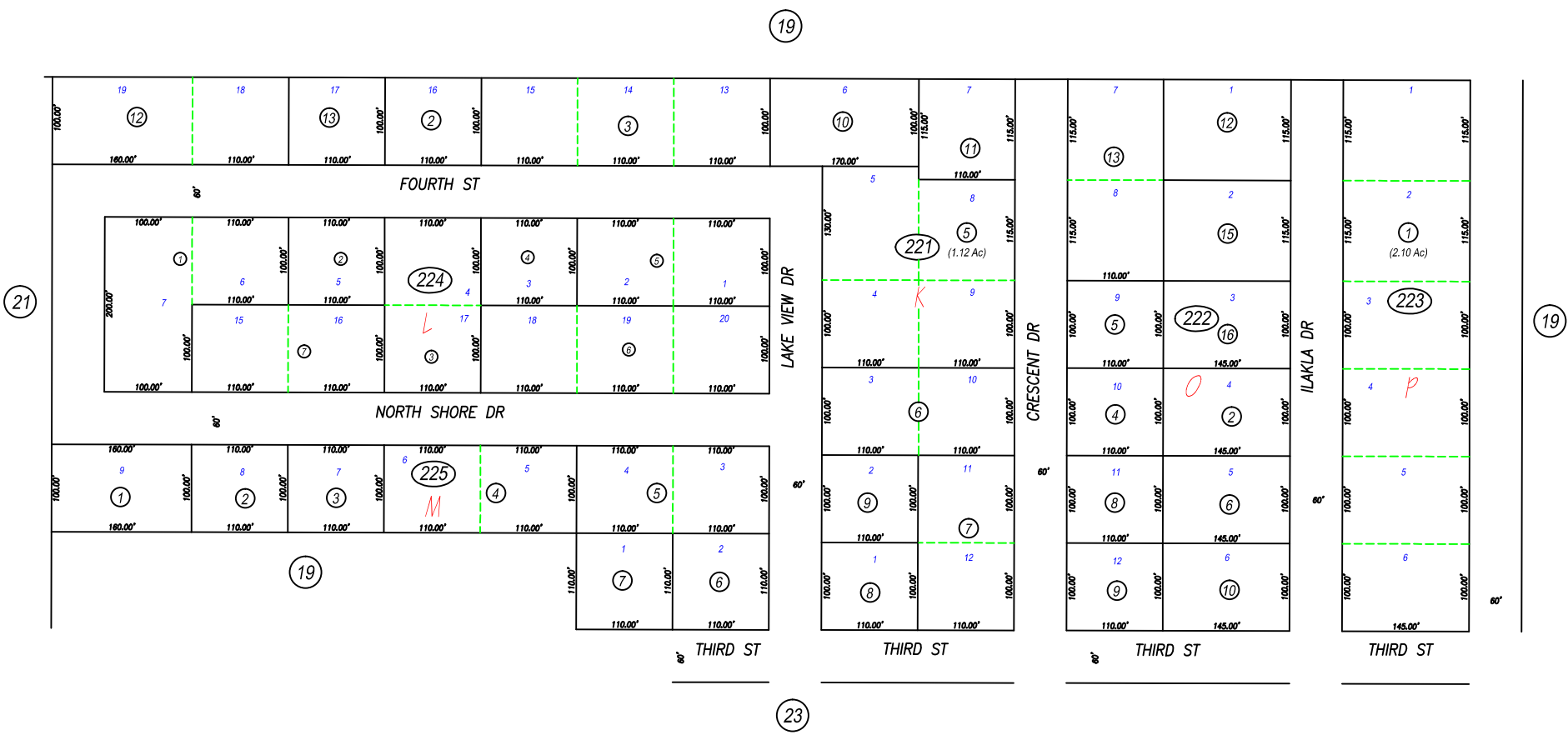


Sec. 15, T29N, R48E

03-22



NOTE: This plat is for assessment purposes only and does not represent a survey. No liability is assumed as to the accuracy of the data delineated hereon. Use of this plat for other than assessment purposes is forbidden unless approved by the Eureka County Assessor's Office.

NOTE: ASSESSOR'S BLOCK NUMBERS SHOWN IN ELLIPSES. ASSESSOR'S PARCEL NUMBERS SHOWN IN CIRCLES.

REV/EUCDAS/NOV 2011/MM
REV/EUCDAS/SEPT 2003/MM
REV/EUCDAS/JUNE 2003/MM
REV/EUCDAS/MAY 2003/MM

EUCDAS/DEC 99/MM
SCALE: 1"=125'

NEVELCO INC
UNIT 2

EUREKA COUNTY

