

Por. of Sec. 5; T31N, R49E

03-56

R.R. R/W

400'

53

55

CITY LIMITS

Bk 05

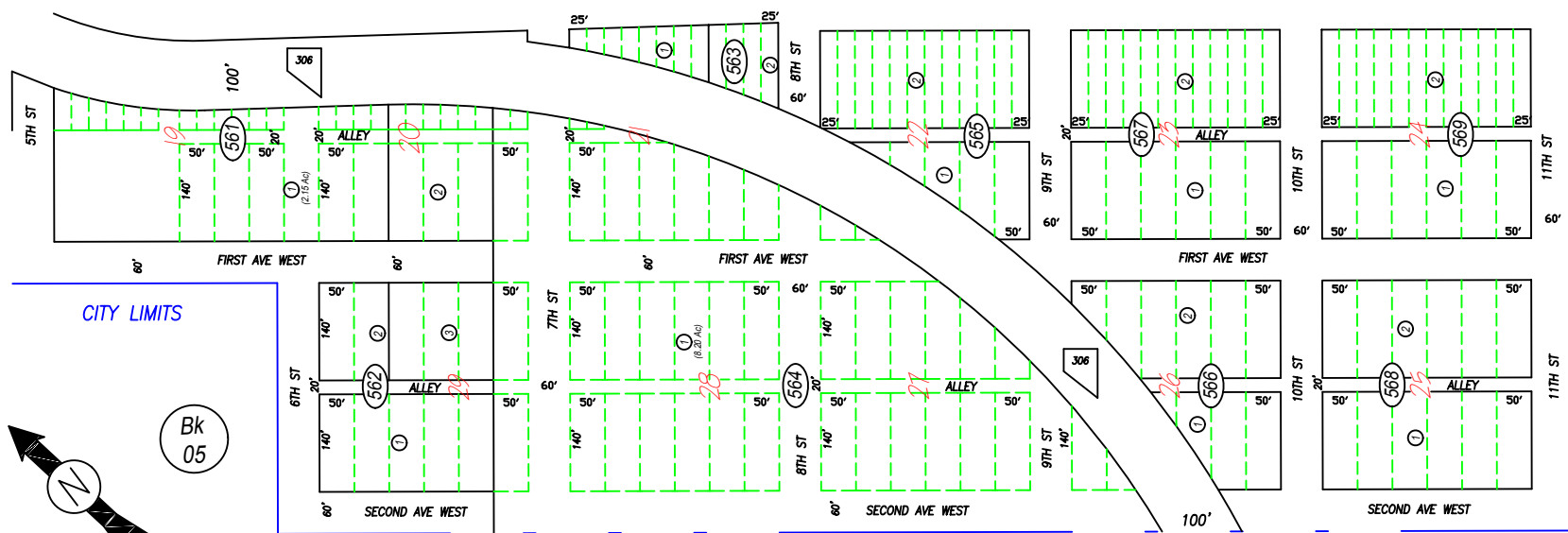
CITY LIMITS

Bk 05

CITY LIMITS

Bk 05

CITY LIMITS



NOTE: This plat is for assessment purposes only and does not represent a survey. No liability is assumed as to the accuracy of the data delineated hereon. Use of this plat for other than assessment purposes is forbidden unless approved by the Eureka County Assessor's Office.

NOTE: ASSESSOR'S BLOCK NUMBERS SHOWN IN ELLIPSES. ASSESSOR'S PARCEL NUMBERS SHOWN IN CIRCLES.



PAGES 52 & 54 DELETED
REPLACED WITH THIS PAGE
SEPT2010/11M

EUCDAS/DEC 99/11M
SCALE: 1"=175'

BEOWAVE

EUREKA COUNTY