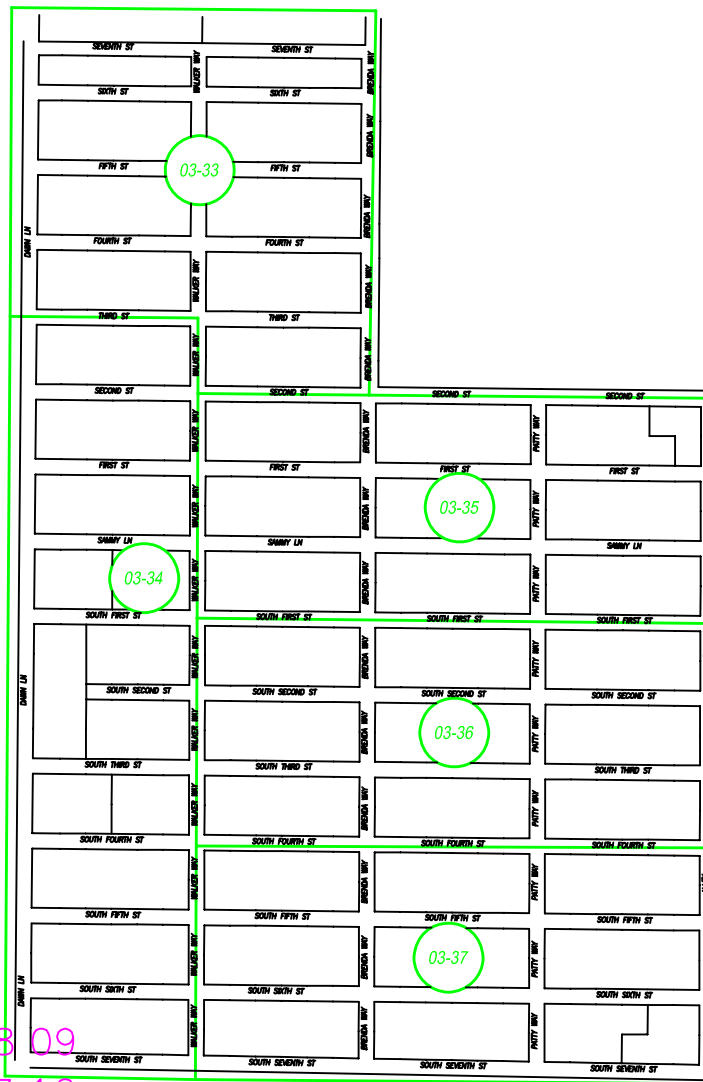


Por. of Sec. 9 - T29N, R48E

INDEX



08 09  
17 16



NOTE: This plot is for assessment purposes only and does not represent a survey. No liability is assumed as to the accuracy of the data delineated hereon. Use of this plot for other than assessment purposes is forbidden unless approved by the Eureka County Assessor's Office.

WALKER VILLA SUBDIVISION

EUCDAS/MAY 2000/1M  
SCALE: 1"=500'

EUREKA COUNTY