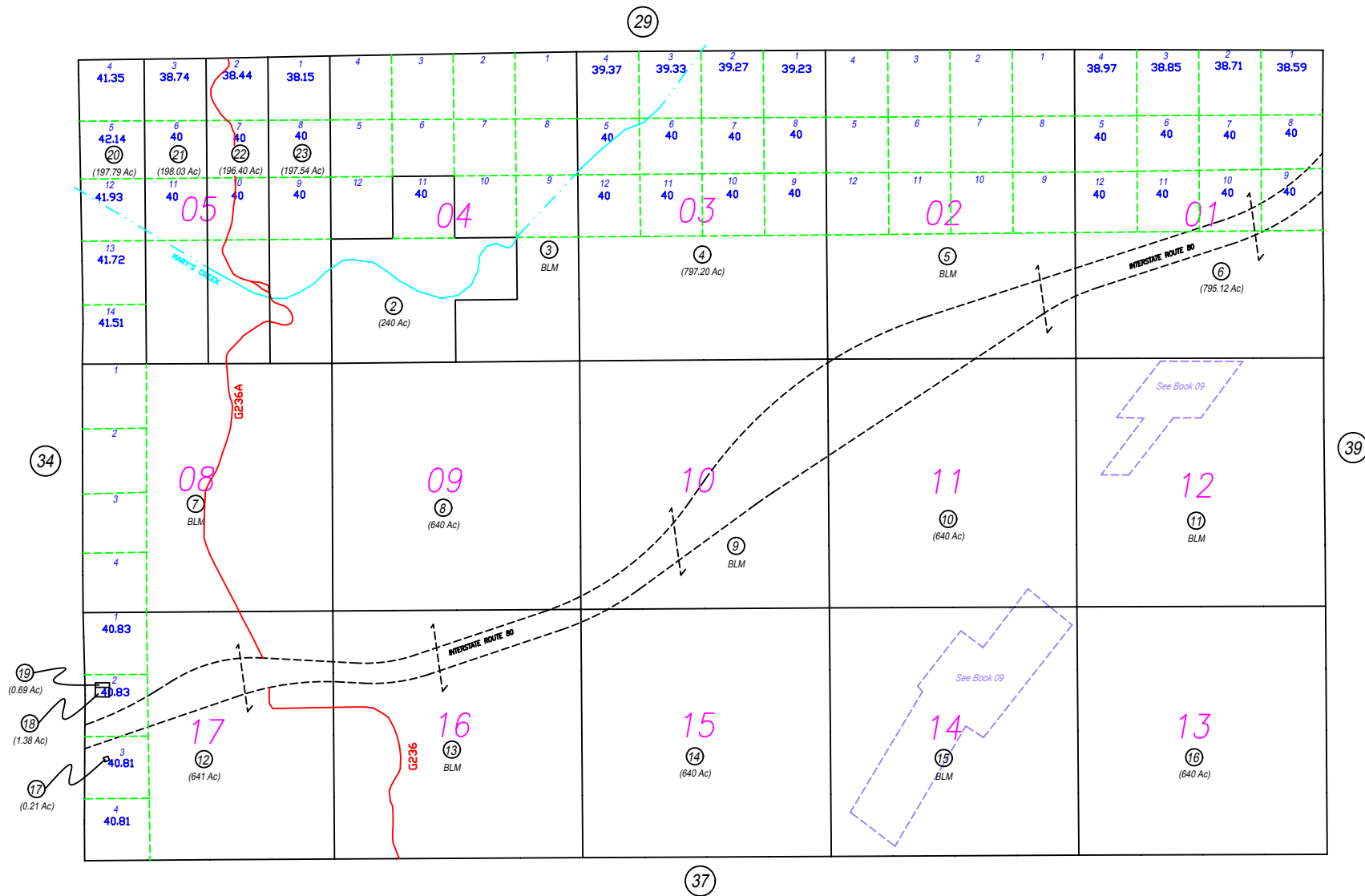


N2 - T32N, R51E

04-36



NOTE: This plot is for assessment purposes only and does not represent a survey. No liability is assumed as to the accuracy of the data delineated hereon. Use of this plot for other than assessment purposes is forbidden unless approved by the Eureka County Assessor's Office.

Map Doc #212155 REV/EUCDAS/AUG 2008/HH
REV/EUCDAS/MAR 2009/HH

EUCDAS/MAR 2009/HH
SCALE: 1"=2200'

EUREKA COUNTY