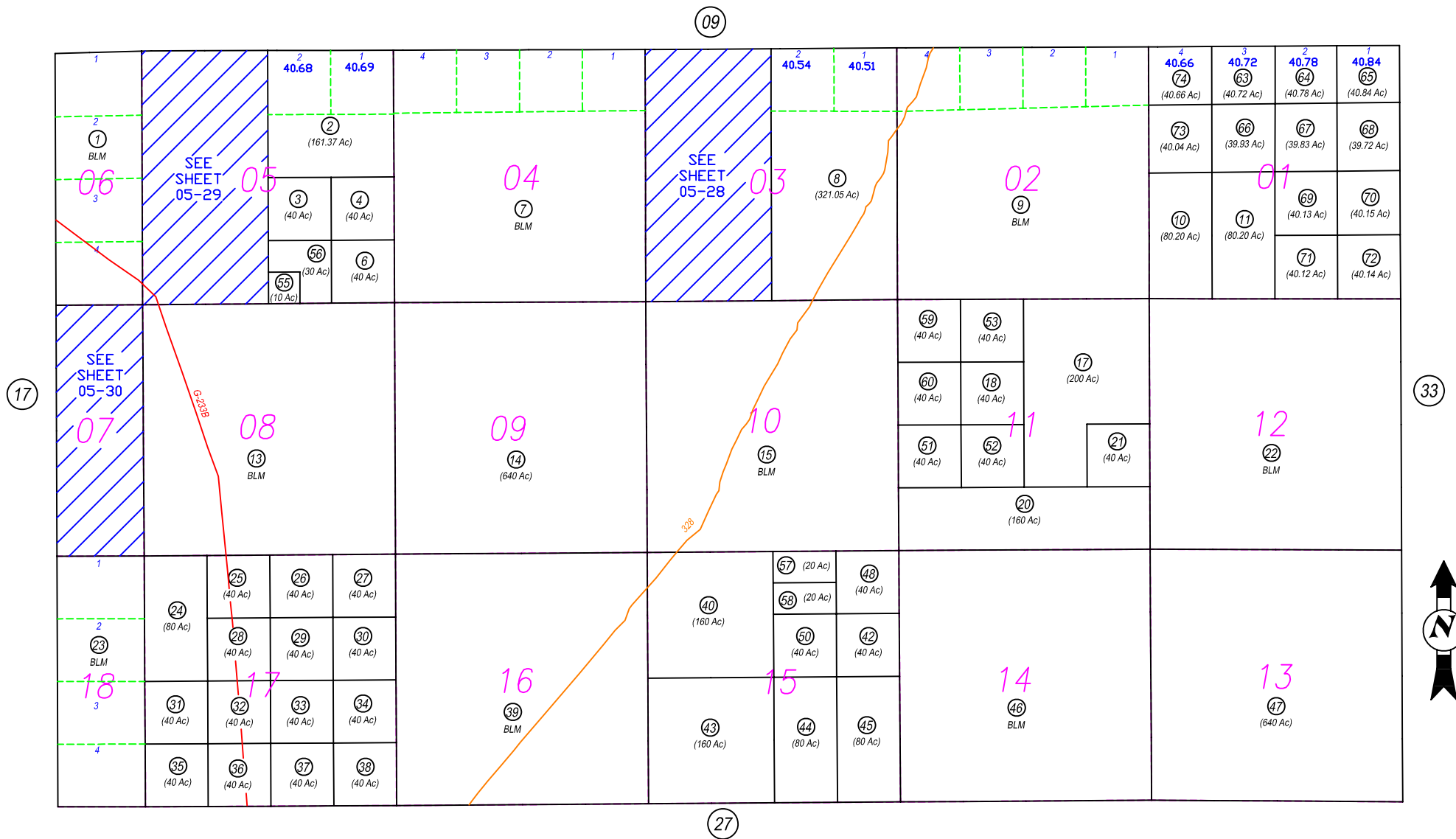


N2 - T30N, R49E

05-26



NOTE: This plot is for assessment purposes only and does not represent a survey. No liability is assumed as to the accuracy of the data delineated hereon. Use of this plot for other than assessment purposes is forbidden unless approved by the Eureka County Assessor's Office.

REV/EUCDAS/SEP 2006/MH
REV/EUCDAS/MJG 2005/MH
Map Reference: 177222
REV/EUCDAS/MJG 2003/MH

EUCDAS/MAR 2000/MH
SCALE: 1"=2000'

EUREKA COUNTY