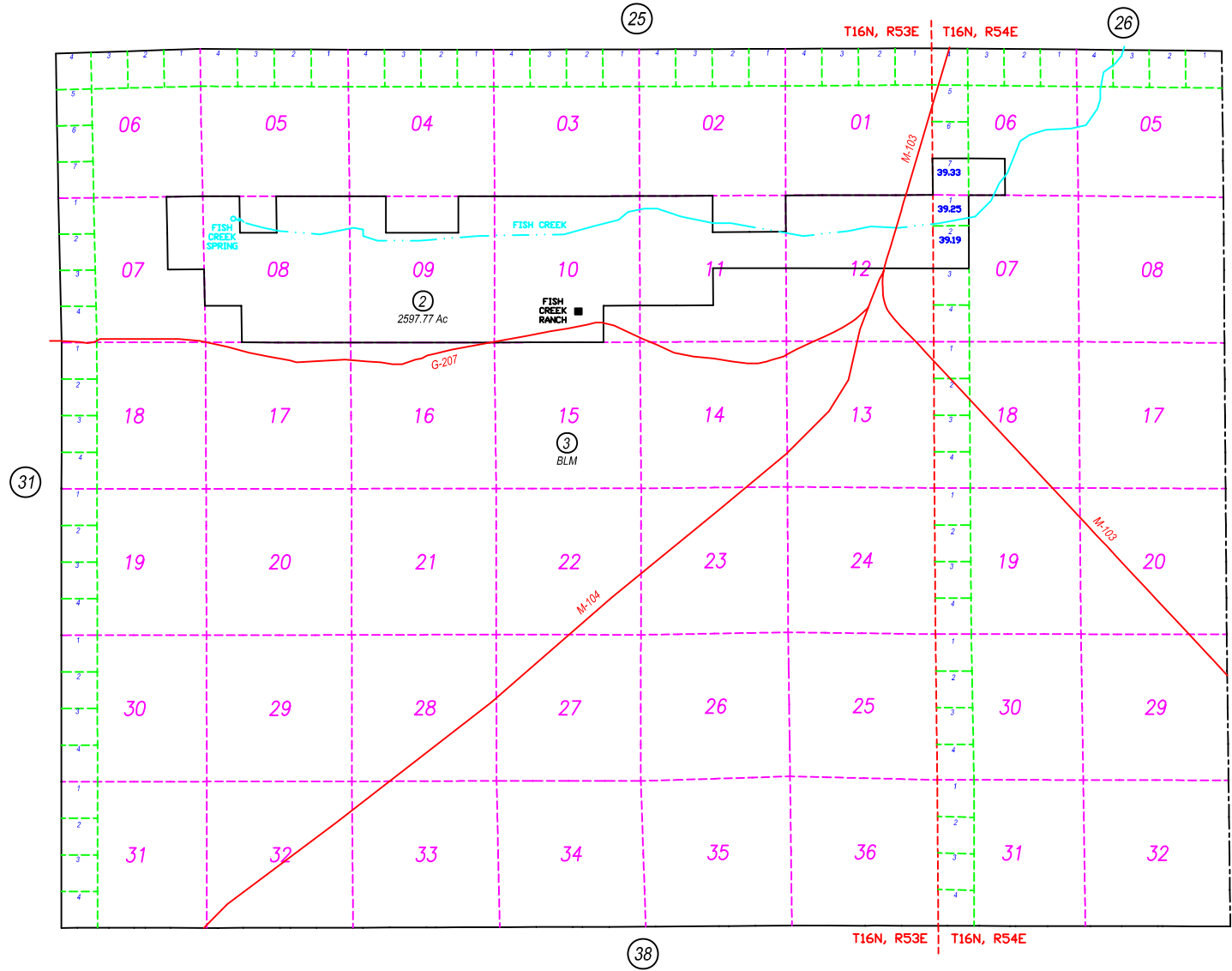


# T16N, R53E & Por. of T16N, R54E

08-32



WHITE PINE COUNTY



NOTE: This plot is for assessment purposes only and does not represent a survey. No liability is assumed as to the accuracy of the data delineated hereon. Use of this plot for other than assessment purposes is forbidden unless approved by the Eureka County Assessor's Office.

REV/EUCDAS/JULY 2003/PH

EUCDAS/MAY 2000/PH  
SCALE: 1"=4000'

EUREKA COUNTY